

DOUBLE SEAL

Inspection Chamber

GROUP 6



For use in areas where particularly high wheel loads are imposed such as aircraft pavements.

Rectangular Frame & Cover with 4 Bolts



F900

SPECIFICATIONS

Standard

EN124-2:2015 / Class F900

Material

EN 1563 - Ductile iron (GGG)

Design

- Design of cover pattern allows for special Logo or project design to be inserted in its specified area on the cover.
- Rectangular frame base design.
- Rectangular cover design with bolts, non slip pattern, double seal, Watertight.

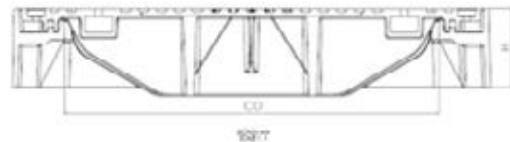
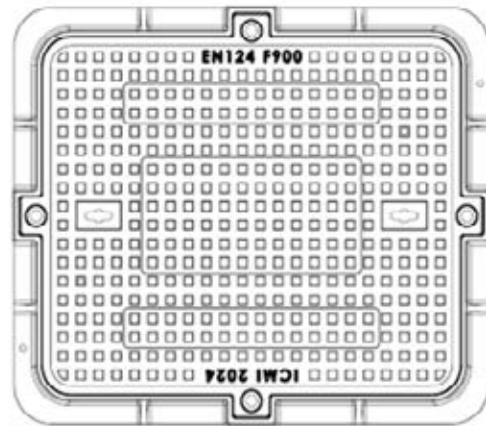


Applied coat according to BS 3416 Epoxy Paint, Or any other type of paint according to the customer's requirements.



All manhole covers are marked with the following:
(Name of Manufacturer - EN124 Class Load and Material)

DIMENSIONS



Art. No.	Over base	Clear Open	Height
IC-G6-D-31501	630X530	500X400	100
All Dimensions in mm			