

DOUBLE SEAL

Inspection Chamber Watertight

GROUP 4



Carriageways of roads (including pedestrian streets), hard shoulders and parking areas.

Square Frame & Cover with 4 Bolts

SPECIFICATIONS

Standard

EN124-2:2015 / Class D400

Material

EN 1563 - Ductile iron (GGG)

Design

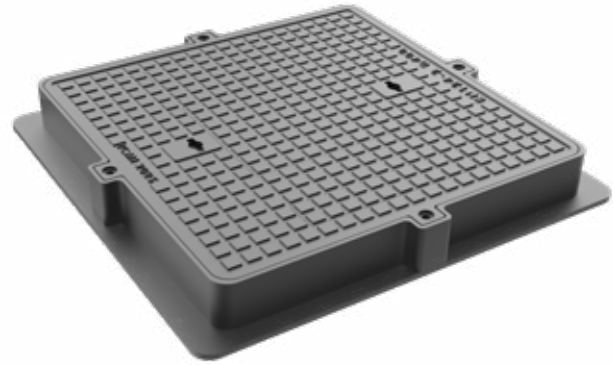
- Design of cover pattern allows for special Logo or project design to be inserted in its specified area on the cover.
- Square frame base design with/without slots for fixations.
- Square cover design with 4 bolts and non slip pattern, double seal.



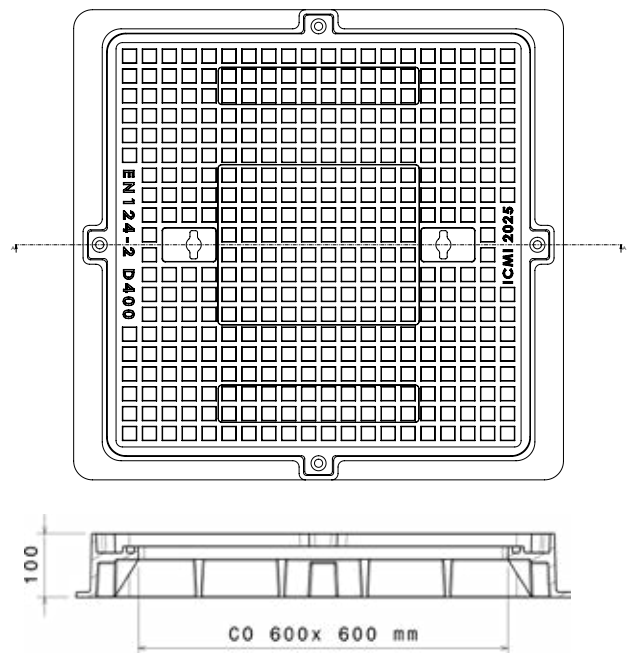
Applied coat according to BS 3416 Epoxy Paint, Or any other type of paint according to the customer's requirements.



All manhole covers are marked with the following:
(Name of Manufacturer - En124 Class Load and Material)



DIMENSIONS



| Art. No. | Over base | Clear Open | Height |
|---------------|-----------|------------|--------|
| IC-G4-D-31501 | 580X580 | 400X400 | 100 |
| IC-G4-D-31502 | 750X800 | 600X600 | 100 |

All Dimensions in mm