

DOUBLE SEAL

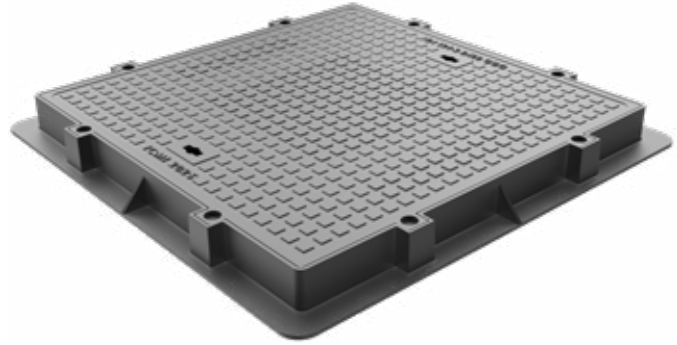
Inspection Chamber Watertight

GROUP 4



Carriageways of roads (including pedestrian streets), hard shoulders and parking areas.

Square Frame & Cover with 8 Bolts



SPECIFICATIONS

Standard

EN124-2:2015 / Class D400

Material

EN 1563 - Ductile iron (GGG)

Design

- Design of cover pattern allows for special Logo or project design to be inserted in its specified area on the cover.
- Square frame base design with/without slots for fixations.
- Square cover design with 8 bolts and non slip pattern, double seal.

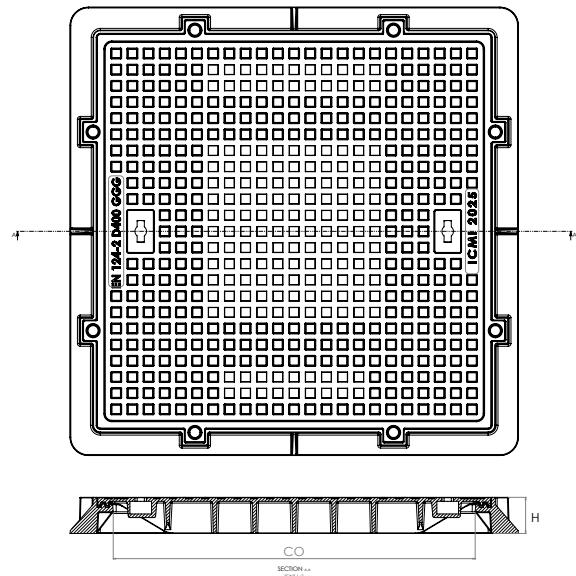


Applied coat according to BS 3416 Epoxy Paint, Or any other type of paint according to the customer's requirements.



All manhole covers are marked with the following:
(Name of Manufacturer - En124 Class Load and Material)

DIMENSIONS



Art. No.	Over base	Clear Open	Height
IC-G4-D-31401	900X900	700X700	100
IC-G4-D-31402	1040X1040	800X800	100
IC-G4-D-31403	1180X1180	900X900	100
IC-G4-D-31404	1240X1240	1000X1000	100
IC-G4-D-31405	1460X1460	1200X1200	100

All Dimensions in mm